



VELUX®

World-Leading Skylights

April 2025 Product Information & Price List
Skylights, Sun Tunnels, Roof Windows & Accessories

Contents

- 4 Pitched Roof Skylights
 - FS Fixed Skylight
 - VS Manual Skylight
 - VSE Electric Skylight
 - VSS Solar Skylight

- 8 Flat Roof Skylights
 - FCM Fixed Skylight
 - VCM Manual Skylight
 - VCS Solar Skylight

- 12 Roof Windows
 - GGL Centre-Pivot Roof Window
 - GPL Dual Action Roof Window

- 14 Sun Tunnels
 - TWF Flexible (Tiled Roof)
 - TWR Rigid (Tiled Roof)
 - TCR Rigid (Flat Roof)

- 16 Blinds
 - Manual & Solar Honeycomb Blackout (Room Darkening)
 - Solar Translucent (Light Filtering)

- 18 Flashing
 - EDW Flashing
 - Custom Flashing

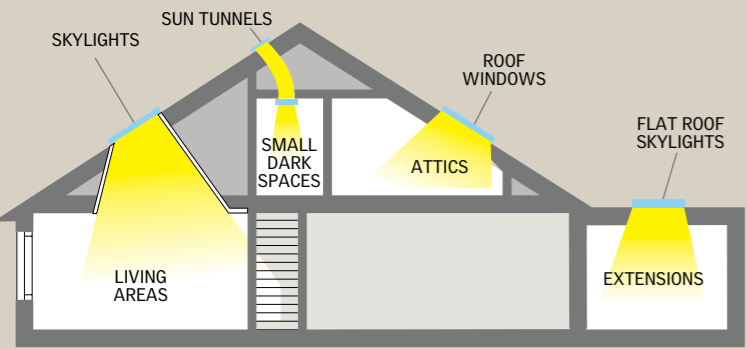
- 20 Light Shafts

- 21 Accessories
 - Manual Controls
 - Electric Controls
 - VELUX ACTIVE

- 22 Price List and Sizes



Transforming Spaces





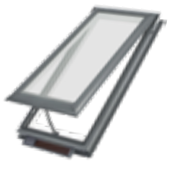
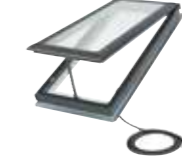
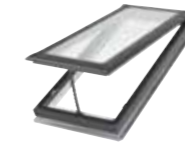
Pitched Roof Skylights



Designed to bring daylight and fresh air into any room, our pitched roof skylights are ideal for roofs over 15° and can be easily installed on tile and corrugated iron roofs using the VELUX EDW flashing kits, or can be custom flashed to suit a wide variety of metal roofs.

Crafted with a durable timber frame, they combine strength, style and performance – helping to transform your home with the beauty of natural light.

*EDW flashing not suitable for wide span metal profiles such as Trimdek or Klip-lok



	FIXED SKYLIGHT (FS)	MANUAL SKYLIGHT (VS)	ELECTRIC SKYLIGHT (VSE)	SOLAR SKYLIGHT (VSS)
NATURAL LIGHT: Contributes toward NCC (building code) regulations requiring natural light	✓	✓	✓	✓
MADE FOR AUSTRALIA: Tested to guarantee reliability and to meet all relevant Australian standards	✓	✓	✓	✓
DESIGN FLEXIBILITY: Without vertical windows, walls can be utilised for storage, decoration, or appliances, and have added privacy	✓	✓	✓	✓
VENTILATION: Contributes toward NCC (building code) regulations requiring ventilation		✓	✓	✓
REDUCED A/C: Reduce the need to install A/C units by building homes that naturally ventilate rising heat		✓	✓	✓
REDUCE MOISTURE: Ventilate in kitchens to remove steam, or bathrooms for ventilation with privacy		✓	✓	✓
REMOTE OPERATED: Skylight is operated by RF wall-mounted keypad with a range of approx. 10m. Multiple skylights can be operated from 1 keypad			✓	✓
RAIN SENSOR: Skylight automatically closes when rain is detected for peace of mind (included)			✓	✓
USES STANDARD GPO: No hard wiring, plugs into standard GPO located in roof cavity (2m cable provided)			✓	
SOLAR POWERED: Solar panel charges a concealed battery, allowing operation day or night and doesn't require an electrician to install				✓
BATTERY POWER BANK: Concealed battery pack charges during the day, providing up to 100 uses when fully charged				✓
NO ELECTRICIAN REQUIRED: Low voltage cables can be safely handled by anyone (does not come with power plug)				✓

Blinds - details on page 16 & 17	FS	VS, VSE, VSS
Solar Honeycomb Blackout (Room Darkening)	FSCD	FSCH
Solar Translucent (Light Filtering)	FSLD	FSLH

Blinds can be operated with Wall Mounted Keypad KLI 310 or KLI 312 (included).

Flashing Information (refer to page 18, 19)

Guarantee Information

10 Years - Skylight, glazing, frame, manual operators, flashing and coverings
3 Years - Blinds, electric & solar components

Package inclusions

VS - Insect screen, operator (manual) and operating eyelet (manual controls purchased separately)
VSE - Insect screen, operator (electric), wall mounted keypad and rain sensor
VSS - Insect screen, operator (solar), battery pack, wall mounted keypad, rain sensor and solar panel



BUILDING CODE REGULATIONS & TECHNICAL PERFORMANCE

U VALUE

	 FIXED SKYLIGHT (FS)	 MANUAL SKYLIGHT (VS)	 ELECTRIC SKYLIGHT (VSE)	 SOLAR SKYLIGHT (VSS)
--	---	--	---	--

Skylight: 2.6 Glass: 1.93	Skylight: 2.5 Glass: 1.93	Skylight: 2.5 Glass: 1.93	Skylight: 2.5 Glass: 1.93
------------------------------	------------------------------	------------------------------	------------------------------

SHGC (Solar Heat Gain Co-efficient)

Skylight: 0.24 Glass: 0.28	Skylight: 0.21 Glass: 0.28	Skylight: 0.21 Glass: 0.28	Skylight: 0.21 Glass: 0.28
-------------------------------	-------------------------------	-------------------------------	-------------------------------

UV PROTECTION

99% Reduction of harmful UV spectrum (UVA & UVB)

✓	✓	✓	✓
---	---	---	---

BUSHFIRE (AS3959)

BAL 40

*Custom-made flashing required. Skylight tested in closed position, metal flywire mesh protection required for opening apertures (consult local council). Roof pitch; 18°-75°

✓	✓	✓	✓
---	---	---	---

HAIL TEST

VELUX Simulated Tests ASTM E822-2009

*Hailstone test not performed on solar panel. Solar panel not attached during test.

✓	✓	✓	✓
---	---	---	---

Window Energy Rating Scheme (WERS)

Maximum 5-star summer rating

✓	✓	✓	✓
---	---	---	---

SKYLIGHT STANDARD (AS4285)

✓	✓	✓	✓
---	---	---	---

OVERHEAD GLAZING (AS1288)

Laminated glass (standard) must be used for skylights installed 3m or more above floor level.

✓	✓	✓	✓
---	---	---	---

WIND LOADS - NON-CYCLONIC REGIONS (AS4055)

✓	✓	✓	✓
---	---	---	---

BOUNDARY SEPARATION

Class 1 and Class 10 buildings: Within 900mm of a boundary wall

Class 2 to Class 9 buildings: 3 metres from a boundary wall

*CSIRO assessment report available on request. VELUX recommends consultation with relevant authority for possible Performance Solution before work commences. Skylight assessed in closed position.

✓	✓	✓	✓
---	---	---	---



HAIL TESTED



BUSHFIRE BAL40



WIND LOADS



ACCESSORIES (Sold Separately)

Manual Controls (VS only)

In-reach - Winder handle: ZZZ 201

Just out of reach - Short control rod (60cm): ZOZ 032

Out of reach - Extension rod (up to 285cm): ZCT 300

(See page 21 for more information)

Electric Controls (VSE/VSS only)

Wall Mounted Keypad KLI 310

VELUX ACTIVE KIX 300

Indoor climate control system

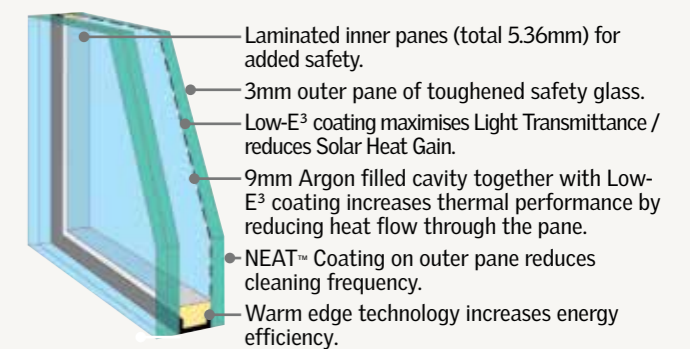
Smart Home Interface Unit: KLF 200

Building management system interface

Read more about our electric control solutions on page 21.

GLAZING

High Performance Double Glazing



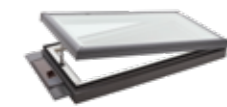
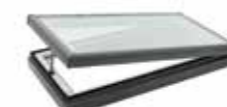


Flat Roof Skylights



VELUX flat roof skylights are designed to provide flat roofs with a versatile and high-performance skylight, transforming home extensions and other spaces with this roof type when combined with custom flashing.

The curb mounted construction makes them an ideal upgrade when replacing aging plastic dome skylights, as they fit onto the same flashing base while providing hail resistance and the superior insulation of double glazing.



Fixed Skylight (FCM)	Manual Skylight (VCM)	Solar Skylight (VCS)
NATURAL LIGHT: Contributes toward NCC (building code) regulations requiring natural light		
✓	✓	✓
DESIGN FLEXIBILITY: Without vertical windows, walls can be utilised for storage, decoration, or appliances and have added privacy		
✓	✓	✓
SKYLIGHT REPLACEMENT: Perfect double glazed product to replace old plastic dome skylights		
✓	✓	✓
VENTILATION: Contributes toward NCC (building code) regulations requiring ventilation		
	✓	✓
REDUCED A/C: Reduce the need to install A/C units by building homes that naturally ventilate rising heat		
	✓	✓
REDUCE MOISTURE: Ventilate in kitchens to remove steam, or bathrooms for ventilation with privacy		
	✓	✓
REMOTE OPERATED: Skylight is operated by RF wall-mounted keypad with a range of approx. 10m		
		✓
RAIN SENSOR: Skylight automatically closes when rain is detected by the externally mounted rain sensor (included)		
		✓
BATTERY POWER BANK: Concealed battery pack charges during the day, providing up to 100 uses when fully charged		
		✓
SOLAR POWERED: Solar panel charges a concealed battery, allowing operation day or night and doesn't require an electrician to install		
		✓
NO ELECTRICIAN REQUIRED: Low voltage cables can be safely handled by anyone		
		✓

Blinds - details on page 16 & 17	FCM	VCM, VCS
Solar Honeycomb Blackout (Room Darkening)	FSCC + ZZZ 199 Tray*	FSCC

Blinds can be operated with Wall Mounted Keypad KLI 310 or KLI 312 (included).

*Requires ZZZ 199 tray

Flashing Information (refer to page 18, 19)

Guarantee Information

10 Years - Skylight, glazing, frame, manual operators, coverings

3 Years - Blinds, electric & solar components

Package inclusions

VCM - Insect screen, operator (manual) and operating eyelet (manual controls purchased separately)

VCS - Insect screen, operator (solar), battery pack, wall mounted keypad, rain sensor and solar panel



BUILDING CODE REGULATIONS/TECHNICAL PERFORMANCE

U VALUE



FCM VCM VCS

SHGC (SOLAR HEAT GAIN CO-EFFICIENT)

UV PROTECTION

99% Reduction of harmful UV spectrum (UVA & UVB)

BUSHFIRE (AS3959)

BAL 40

*Custom-made flashing required. Skylight tested in closed position, metal flywire mesh protection required for opening apertures (consult local council). Roof pitch; 0-60°.

HAIL TEST

VELUX Simulated Tests ASTM E822-2009

*Hailstone test not performed on solar panel. Solar panel not attached during test.

Window Energy Rating Scheme (WERS)

Maximum 5-star summer rating

SKYLIGHT STANDARD (AS4285)

*Cyclone test not performed with screws provided, installation requires #8 roofing screws.

OVERHEAD GLAZING (AS1288)

WIND LOADS - NON-CYCLONIC REGIONS (AS4055)

NT DTCM PRESSURE RATINGS

*Skylight must be installed in accordance with the engineering drawings, contact VELUX for more information.

BOUNDARY SEPARATION

Class 1 and Class 10 buildings: Within 900mm of a boundary wall

Class 2 to Class 9 buildings: 3 metres from a boundary wall

*CSIRO assessment report available on request. VELUX recommends consultation with relevant authority for possible Performance Solution before work commences. Skylight assessed in closed position



HAIL TESTED



BUSHFIRE BAL40



WIND LOADS



ACCESSORIES (Sold Separately)

Manual Controls (VCM only)

In-reach - Winder handle: ZZZ 212
 Just out of reach - Short control rod (60cm): ZOZ 032
 Out of reach - Extension rod (up to 285cm): ZCT 300

(See page 21 for more information)

Electric Controls (VCS only)

Wall Mounted Keypad KLI 310

VELUX ACTIVE KIX 300

Indoor climate control system

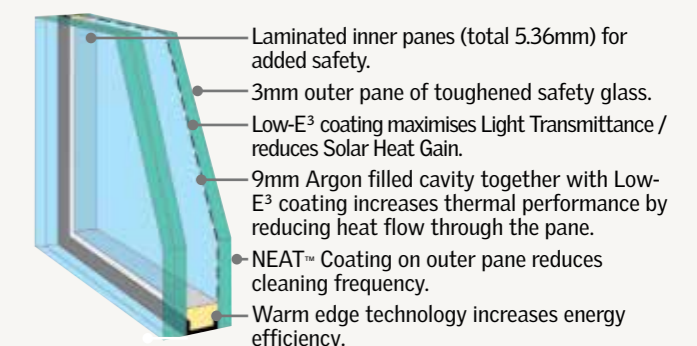
Smart Home Interface Unit: KLF 200

Building management system interface

Read more about our manual and electric control solutions on page 21.

GLAZING

High Performance Double Glazing
 Standard across entire skylight range



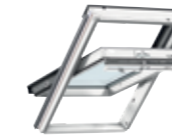
FCM 4646 & FCM 4672 outer pane is 3.9mm.



Roof Windows



Specifically designed for use in attic spaces, our roof windows turn underutilised areas into an extra bedroom, retreat or home office. The opening mechanisms have been built to allow quick and easy use within reach, adding both natural light and ventilation to otherwise dark spaces. Roof windows help you maximise your home's potential, allowing your attic to become a functional extension of your living space.



	GGL	GPL
NATURAL LIGHT: Contributes toward NCC (building code) regulations requiring natural light	✓	✓
CLEAN FROM INSIDE: Can be rotated 180° and locked in place for cleaning the outer pane from inside	✓	✓
VENTILATION: Contributes toward NCC (building code) regulations requiring ventilation	✓	✓
DUAL OPENING: The GPL can be opened both in center pivot motion and in top hung awning style		✓
USABLE ATTIC SPACE: Being top hung, the sash opens outwards, providing more functional attic space		✓
OPTIONAL INSECT SCREEN: Insect screens are available, keeping out flies and mosquitoes	✓	✓

BUILDING CODE REGULATIONS/TECHNICAL PERFORMANCE	GGL	GPL
CODEMARK	✓	✓
U VALUE		Roof Window: 1.3 Glass: 1.0
SHGC (SOLAR HEAT GAIN CO-EFFICIENT)		Roof Window: 0.30 Glass: 0.30
UV PROTECTION 99% Reduction of harmful UV spectrum (UVA & UVB)	✓	✓
SKYLIGHT STANDARD (AS4285) *Except cyclonic wind pressure (GPL only)	✓	✓
OVERHEAD GLAZING (AS1288)	✓	✓
BOUNDARY SEPARATION Class 1 and Class 10 buildings: Within 900mm of a boundary wall Class 2 to Class 9 buildings: 3 metres from a boundary wall *CSIRO assessment report available on request. VELUX recommends consultation with relevant authority for possible Performance Solution before work commences. Skylight assessed in closed position	✓	✓

OPENING RESTRICTORS

NCC Vol 1 & 2 regulations (Prevention of Falls from Windows – Balustrades & Barriers):
Contact VELUX for information relating to restrictor devices for within-reach opening roof windows



HAIL TESTED



WIND LOADS



Blinds - details on page 16 & 17	GGL	GPL
Manual Honeycomb Blackout (Room Darkening)	FHC	FHC
Insect Screen *ZIL Insect Screen is fitted to ceiling to cover plaster reveal. Suitable for within-reach applications only. NB: side channel length to be cut to size.	ZIL	ZIL

Flashing Information (refer to page 18, 19)

Guarantee Information

10 Years - Skylight, glazing, frame, flashing and coverings
3 Years - Blinds



Sun Tunnels

When a traditional skylight isn't an option, sun tunnels offer the perfect alternative. Designed for tight spaces like walk-in robes, pantries and powder rooms, they provide natural light to spaces where a traditional skylight wouldn't fit or when the roof cavity has obstructions. With minimal structural changes required, they are a quick, cost-effective way to brighten dark areas by introducing daylight when you don't want to rely on artificial lighting.



SUITABLE FOR ROOFING TYPE

PRODUCT	TWF	TWR	TCR NEW
Suitable for roof material	Tiled Roof	Tiled Roof	Metal Roof
Suitable for roof pitches	15-60°	15-60°	0-60°
Tunnel diameter - 350mm	✓	✓	✓
Highly reflective shaft provides up to 3x as much light compared to TWF		✓	✓
Flexible tunnel allows installation even when obstructions in the roof cavity exist	✓		



CEILING DIFFUSER

EASY TO CLEAN

Threaded diffuser screws on and off allowing for easy removal for cleaning.

EDGE GLOW

A clear ring along the diffuser's circumference extends the reach of the light.

BUILDING CODE REGULATIONS/TECHNICAL PERFORMANCE

	TWF	TWR	TCR
CODEMARK	Yes	Yes	TBC
U VALUE	2.4	2.4	N/A
SHGC	0.5	0.61	N/A
BUSHFIRE (AS3959)	N/A	BAL 29 Roof pitch; 18°-60°	N/A
SKYLIGHT STANDARD (AS4285)	Yes *Except Cyclonic Wind Pressure	Yes *Except Cyclonic Wind Pressure	YES



HAIL TESTED



BUSHFIRE BAL29



WIND LOADS



CODEMARK® Australia 30091

Flashing Information (refer to page 18, 19)

TCR requires custom flashing.

Guarantee Information

7 Years

Package inclusions

TWF - Integrated flashing, 2000mm flexible tunnel and ceiling diffuser

TWR - Integrated flashing, 1700mm rigid tunnel including 2x 45° 'elbows' and ceiling diffuser

TCR - 1150mm rigid tunnel including 2x 45° 'elbows' and ceiling diffuser

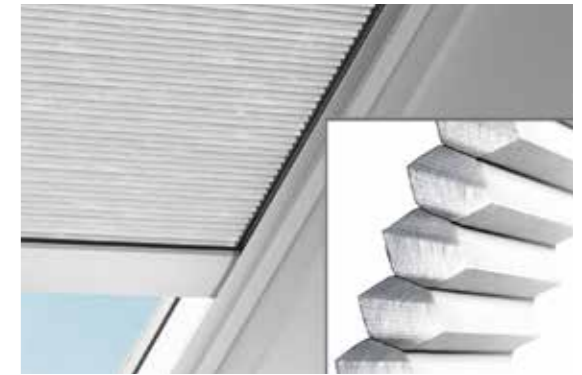


Manual & Solar Honeycomb Blackout (Room Darkening) - Ultimate Light Control & Insulation

For those who want superior thermal comfort and light blocking.

- Double-layered fabric for superior insulation – Keeps your home cooler in summer and warmer in winter.
- Room darkening effect – Ideal for bedrooms and media rooms.
- Modern, sleek design – Neatly retracts for a clean look when not in use.

Best for: Bedrooms, Home Offices, Media Rooms



Solar Translucent (Light Filtering) – Soft Light & Privacy

For those who love diffused or softer natural light.

- Gently diffuses daylight – Reduces glare while maintaining a bright, airy feel.
- Flexible light control – Adjustable to any position on the skylight.
- Elegant fabric texture – Adds softness and warmth to any room.

Best for: Living Rooms, Kitchens & Bathrooms



Blind	Light Reduction	Heat Reduction
Manual & Solar Honeycomb Blackout (Room Darkening)	98%	70%
Solar Translucent (Light Filtering)	40%	27%

BLIND OPTIONS (in stock)	FS	VS, VSE, VSS	FCM	VCM, VCS	GGL, GPL
Manual Honeycomb Blackout (Room Darkening) 1045					FHC
Solar Honeycomb Blackout (Room Darkening) 1045	FSCD	FSCH	FSCC + ZZZ 199 Tray*	FSCC	
Solar Translucent (Light Filtering) 1016	FSLD	FSLH			

Solar blinds can be operated with Wall Mounted Keypad KLI 310 or KLI 312 (included).

*Requires ZZZ 199 tray to install blind.

Special Order Skylight and Roof Window Blind Options

Additional colours available upon request. Our special order blinds are shipped from Europe. Contact VELUX for more information.

Manual & Solar Honeycomb Blackout (Room Darkening)

Solar Translucent (Light Filtering)

 1155 Beige	 1163 Grey	 1164 Grey Melange	 1171 Dark Sand	 1172 Light Grey	 1256 Classic White	 1259 Classic Sand	 1275 Natural	 1282 Dark Grey	 1286 Jeans Blue
 1047 Charcoal	 1049 Golden Beige	 1156 Blue	 1165 Light Brown	 1173 Petrol	 1274 Charcoal	 1276 Dusty Brown	 1277 Dusty Sand	 1278 Beige	 1280 Forest Green
 1168 Dusty Green	 1169 Light Blue	 1170 Dark Taupe	 1166 Ivory	 1167 Orange	 1281 Mint Green	 1283 Light Beige	 1284 Grey	 1285 Soft Blue	 1279 Red Wine

Skylight & Roof Window Blinds

No window is complete without a blind and the same is true for skylights. VELUX blinds are tailored to perfectly fit VELUX skylights, giving you control at your fingertips.

Whether you're looking for a solution to soften natural light or provide total blackout, our range of blinds provides the ideal solution. Choose from our manual and solar Honeycomb Blackout (room darkening) or Solar Translucent (light filtering) blinds to complete your skylight installation.



Flashing

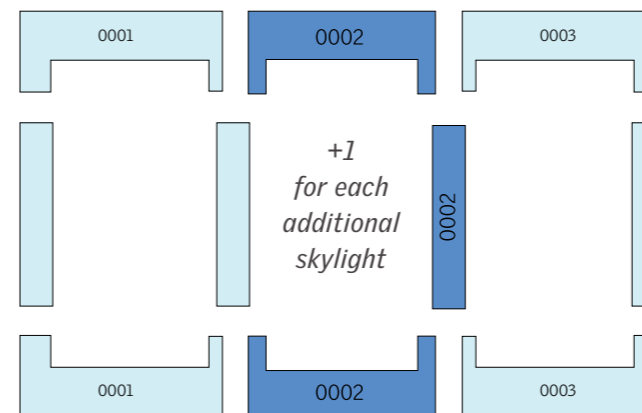
VELUX Flashing EDW

VELUX offers a range of flashing kits designed to integrate your skylights perfectly into your roofing material, ensuring the skylight is weathertight in Australia's varying weather conditions.

EDW Flashing is designed to direct water through the aluminium side channels and over the apron, which is designed to be moulded to the shape of your tiles for a secure fit.

EDW Flashing is compatible with metal roofs that feature a profile height of less than 30mm, such as corrugated iron. Alternatively, custom flashing is a common option for metal roofing. For slate roofs, VELUX provides a range of EDL flashing solutions tailored to meet your needs.

Side by Side



VELUX skylights can be coupled together using 'combi' flashing in a variety of configurations to add truly inspiring features to any room of the house.

When installing skylights with 'combi' flashing, skylights must be installed with a strict 100mm space between each skylight. Contact VELUX when installing VSS above/below combination due to positioning of solar panel.

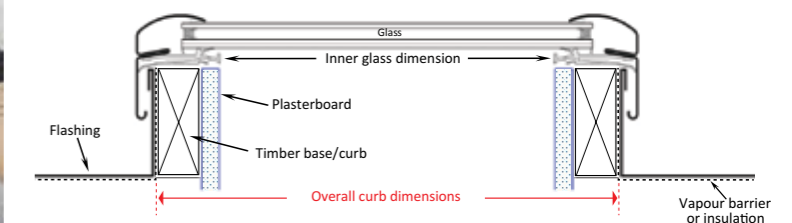
Custom Flashing - All Other Solutions

Required for flat roof skylight installations. Also useful in situations where VELUX flashing isn't suitable - such as in bushfire-prone areas, when installing outside the recommended roof pitch range (using a pitch adaptor), or when colour matching to the roof is preferred.

Not supplied by VELUX, contact VELUX for more information on custom flashing.



Preparation guide for custom-made flashing.



Note: Timber on custom-made base ideally should not exceed 38mm - otherwise plasterboard / lining when installed may encroach upon glass area.

**Skylight must be installed on a timber base with plasterboard as shown (typical installation) to achieve 2.9 U-value rating.*

Light Shafts

Why Getting it Right Matters

The internal lightshaft is a crucial element for your skylight installer to get right, as it significantly impacts both the appearance and performance of your skylight. A well-designed lightshaft enhances the overall look while maximising natural light. When done correctly, it can completely transform a space, making it brighter, more open and visually stunning.



Splaying the Shaft

The angle and size of the lightshaft are key factors in determining how light enters the room. Splaying the shaft (angling the shaft outward) creates a larger footprint on the ceiling. By creating a wider opening with the lightshaft you have a better view to the sky and maximise the amount of natural light entering the room.



Refining the Finish

In cathedral ceilings, where exposed trusses or bulkheads are present between multiple skylights, wrapping the timber with gyprock can highlight architectural elements rather than detract from them. A detailed and well finished bulkhead or truss wrap ensures the skylight feels like an intentional design feature rather than an afterthought.



Think Outside the Square

A lightshaft does not have to mirror the shape of the skylight itself. The internal shaft can be finished in a variety of creative forms, such as circles, ovals or even star shaped designs. This flexibility allows homeowners and designers to transform the lightshaft into a unique architectural feature, showcasing the skylight in the best light.

Accessories

MANUAL ACCESSORIES

Winder Handles

VS: ZZZ 201



VCM: ZZZ 212



Extension Rods

Short Control Rod: ZOZ 032

60 cm rod that attaches to the operating hook for use just out of reach.



Telescopic Rod: ZCT 300

Adjustable telescopic rod that can be extended between 145-285cm to operate VS/VCM skylights.



ELECTRONIC ACCESSORIES

Interface Unit: KLF 200

Interface unit for building management systems and 3rd party switches. KLF 200 can be set up to perform 5 independent groups of products.



Keypad: KLI 310

Radio frequency wall mounted keypad used to operate VELUX products. Comes with a wall mounting kit. Battery powered (AAA).



VELUX Touch: KLR 300

All-in-one remote designed to control VELUX products such as skylights and blinds. Can be fitted to the wall with magnetic holder. Battery powered (AAA).



VELUX ACTIVE

With VELUX ACTIVE, sensors continuously monitor the temperature, humidity and CO2 levels in your home and open or close your VELUX electric and solar powered products to create a healthier indoor climate. VELUX ACTIVE kit includes 1x Gateway, 1x Climate Sensor and 1x Departure Switch.



Internet Gateway

The Gateway allows you to control your VELUX products from your smartphone and connects your VELUX products, indoor climate sensor and departure switch. It takes inputs from local weather data, your smartphone and sensors to control your VELUX products. The Gateway operates on 2.4 GHz, ensure you select the 2.4 GHz channel in dual mode on your modem.

Climate Sensor

The indoor climate sensor continuously measures temperature, humidity and air quality (CO2 levels) in the room. One climate sensor is recommended per room with VELUX products. Additional sensors, such as the KLA 300, can be purchased.

Departure Switch

Tap the departure switch as you leave home to turn off the VELUX ACTIVE system while you're away.

Price List

Skylights and roof windows (does not apply to FCM models) can only be installed as per orientation depicted below.

Pitched Roof Skylights



Overall frame dimension wxh mm		550x700	550x980	550x1180	550x1400	550x1800	780x780	780x980	780x1180	780x1400	1140x700	1140x1180
Skylights	Size code	C01	C04	C06	C08	C12	M02	M04	M06	M08	S01	S06
FS (Fixed Skylight)	RRP \$	532	614	705	788	1114	725	765	866	969	843	1006
VS (Manual Skylight)	RRP \$	1228	1248	1334	1402	-	1402	1463	1597	1731	1540	1941
VSE (Electric Skylight)	RRP \$	2311	2339	2402	2461	-	-	2509	2618	2727	2595	2894
VSS (Solar Powered Skylight)	RRP \$	2492	2522	2590	2653	-	2643	2705	2822	2941	2798	3120

Blinds	Size code	C01	C04	C06	C08	C12	M02	M04	M06	M08	S01	S06
FSCD (Solar Honeycomb Blackout (Room Darkening) FS)	RRP \$	614	614	614	614	768	628	628	628	628	641	641
FSLD Solar Translucent (Light Filtering) FS	RRP \$	614	614	614	614	-	628	628	628	628	641	641
FSCH Solar Honeycomb Blackout (Room Darkening) VS/VSE/VSS	RRP \$	614	614	614	614	-	628	628	628	628	641	641
FSLH Solar Translucent (Light Filtering) VS/VSE/VSS	RRP \$	614	614	614	614	-	628	628	628	628	641	641

Flashing	Size code	C01	C04	C06	C08	C12	M02	M04	M06	M08	S01	S06
EDW (Tile/Corrugated Iron Roof)*	RRP \$	109	114	115	122	152	131	131	135	138	139	162

*EDW flashing not suitable for wide span metal profiles such as Trimdek or Klip-lok

Flat Roof Skylights



FCM inner glass dimension wxh mm	368x775	572x572	572x775	572x876	572x1181	572x1792	775x775	775x1181	775x1410	775x1842	876x876	876x1181	1181x572	1181x1181	1181x1842	
Overall curb dimension wxh mm	460x870	665x655	665x870	665x970	665x1275	665x1885	870x870	870x1275	870x1505	870x1935	970x970	970x1275	1275x665	1275x1275	1275x1935	
Skylights	Size code	1430	2222	2230	2234	2246	2270	3030	3046	3055	3072	3434	3446	4622	4646	4672
FCM (Fixed Skylight)	RRP \$	351	381	414	438	497	896	481	611	745	1889	547	645	-	677	2102
VCM (Manual Skylight)	RRP \$	-	1296	-	1400	1547	-	1621	1760	-	-	1694	-	-	2064	-
VCS (Solar Skylight)	RRP \$	-	2510	-	2654	2828	-	2837	2976	-	-	2899	-	2846	3119	-

FCM 2270/3072/4672 not recommended for landscape orientation.

Blinds*	Size code	1430	2222	2230	2234	2246	2270	3030	3046	3055	3072	3434	3446	4622	4646	4672
FSCC Solar Honeycomb Blackout (Room Darkening)	RRP \$	-	615	615	615	615	706	627	627	-	-	641	641	680	680	-

FCM Blind Trays*	Size code	1430	2222	2230	2234	2246	2270	3030	3046	3055	3072	3434	3446	4622	4646	4672
ZZZ 199	RRP \$	-	95	95	95	95	122	98	98	-	-	101	101	105	105	-

*ZZZ 199 blind tray required to install FSCC blind to FCM skylight.

Refer to your VELUX distributor for shipping times.

Price list effective 1st April 2025. All prices are supply only and include GST. Prices subject to change without notice. All prices are Recommended Retail Prices (RRP) only.

Roof Windows



Overall frame dimension wxh mm		550x780	550x980	780x980	780x1180	780x1400	1140x1180
Roof Windows	Size code	CK02	CK04	MK04	MK06	MK08	SK06
GGL (Centre Pivot Roof Window)	RRP \$	814	863	1010	-	1234	1528
GPL* (Dual Action Roof Window)	RRP \$	-	969	1114	1221	1381	1608

*GPL suitable for 15°-55° installation pitch.

Blinds	Size code	CK02	CK04	MK04	MK06	MK08	SK06
FHC Manual Honeycomb Blackout (Room Darkening)	RRP \$	247	265	273	292	318	342
ZIL (Insect Screen)	RRP \$	339	339	419	419	419	465

Flashing	Size code	CK02	CK04	MK04	MK06	MK08	SK06
EDW (Tile/Corrugated Iron Roof)*	RRP \$	109	126	145	149	152	170

*EDW flashing not suitable for wide span metal profiles such as Trimdek or Klip-lok

Sun Tunnels

Product	RRP \$
TWR OK14 - 1700mm tunnel length (Rigid Sun Tunnel, Pitched Roof).	747
TWF OK14 - 2000mm tunnel length (Flexible Sun Tunnel, Pitched Roof).	461
TCR 014 - 1150mm tunnel length (Rigid Sun Tunnel, Flat Roof).	795
ZTR OK14 (Rigid Extension 1240mm).	297

Accessories

Product	Description	RRP \$
ZZZ 201	Winder handle (white to operate VS opening skylights within reach).	57
ZZZ 212	Winder handle (white to operate VCM low pitch opening skylights within reach).	57
ZZZ 203	Eyelet with Universal Joint.	69
ZOZ 032	Short rod control (60 cm) to operate within reach.	70
ZCT 300	Extendable rod control to operate manual opening skylights, 145cm - 285cm length.	96
KIX 300	VELUX ACTIVE starter kit - includes 1 x internet gateway, 1 x climate sensor, 1 x departure switch.	709
KLA 300	VELUX ACTIVE Indoor climate sensor. Additional climate sensors required to extend your VELUX ACTIVE system to additional rooms.	317
KLF 200	Interfact Unit. Connect to third party building management systems, sensors and switches.	741
KLR 300	Touchscreen remote to operate multiple products.	285
KLI 310	Radio frequency wall mounted keypad used to operate VELUX products.	176

Price list effective 1st April 2025. All prices are supply only and include GST. Prices subject to change without notice. All prices are Recommended Retail Prices (RRP) only.



VELUX®

VELUX Australia Pty Ltd
78 Henderson Road, Alexandria NSW 2015

1300 859 856
customer.service@velux.com.au
@veluxaustralia

[velux.com.au](https://www.velux.com.au)

The utmost care has been taken to provide accurate information. However, VELUX shall not be held responsible for any consequences arising from any errors or omissions in the catalogue nor for any damage or accidental loss resulting from the use of the information herein. VELUX reserves the right to modify, through development improvements, the products displayed in this brochure without notification.
©2025 VELUX GROUP, VELUX®, VELUX logo, Made for Australia logo are registered trademarks. V-AUS 0325